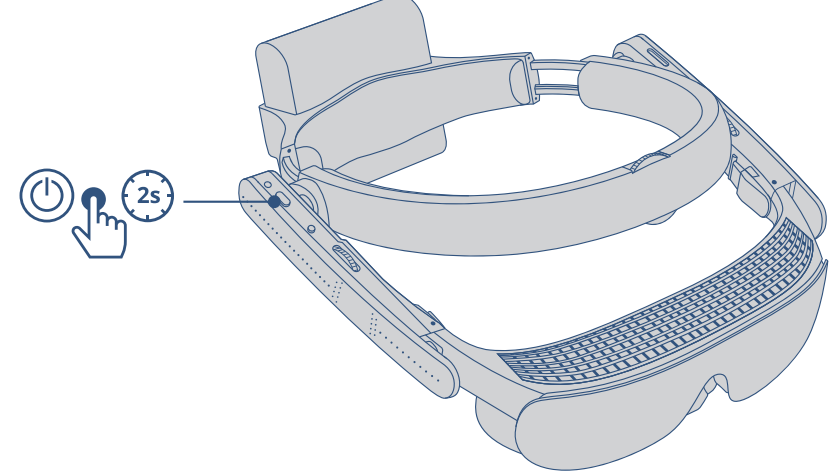


## 5 Turn on eSight and the Remote

Turn on eSight. Wait for live video on the screens, and then turn on the remote.

### Step 1 eSight On



### Step 2 Remote On

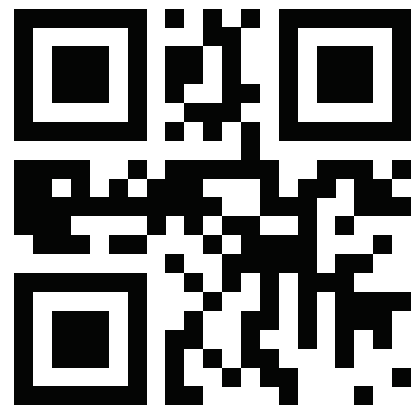


To continue, follow the onboarding on your eSight.

## i Connect & Register eSight

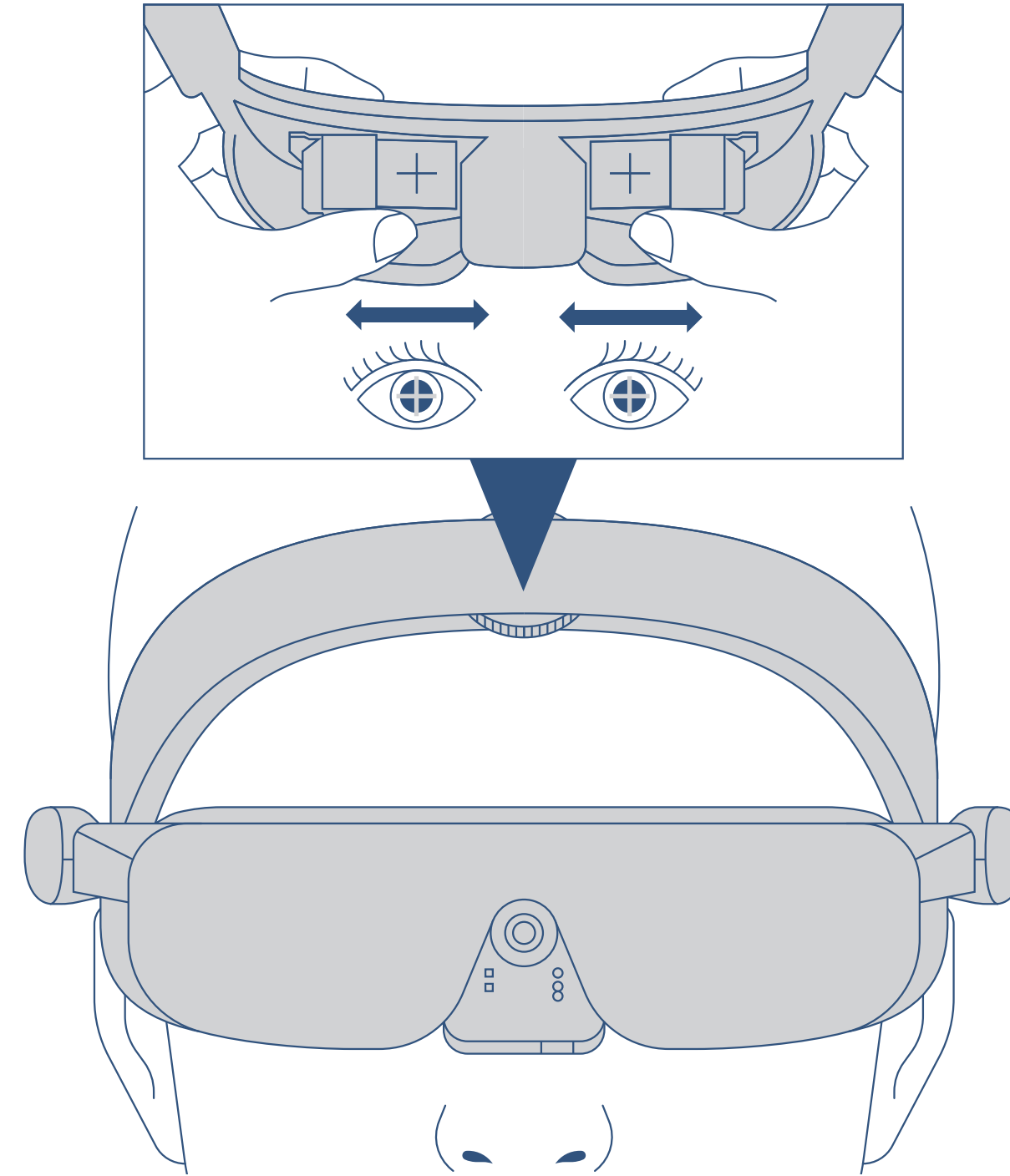
You'll need access to a computer or mobile phone with an internet or Wi-Fi connection to complete the Wi-Fi and eSight Account setup.

To generate your Wi-Fi QR Code and Setup your eSight Account Visit: [eSightSetup.com](http://eSightSetup.com) or scan the QR Code with your phone to go to the website.



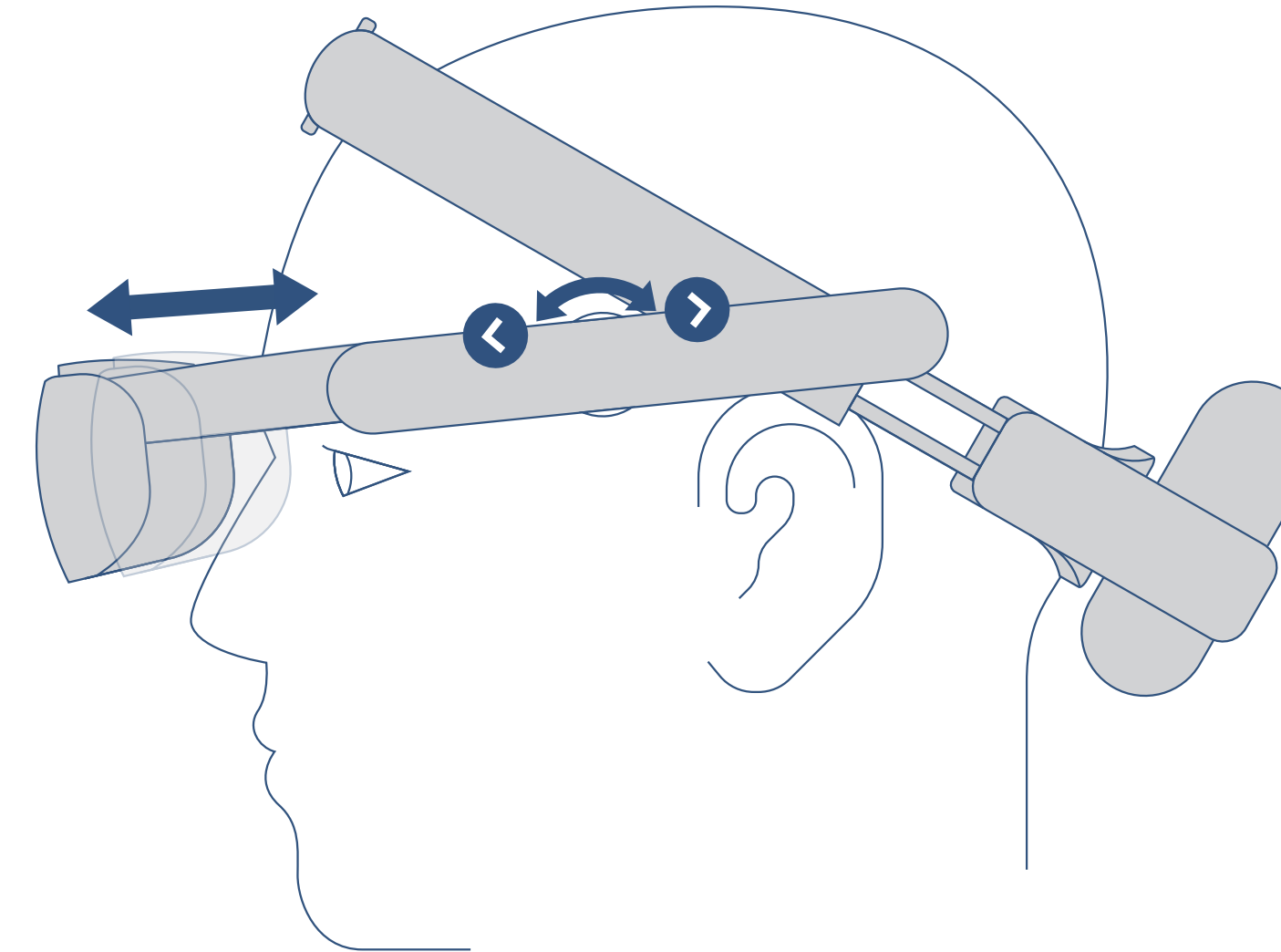
## i Set the Eye to Eye Distance

Slide the screens to center them over your eyes.



## i Set the Screen to Eye Distance

On both sides, rotate the **Arm Dial** forward to extend or backward to retract the visor.



eSight<sup>4</sup>

# Quick Start Guide

## Introduction

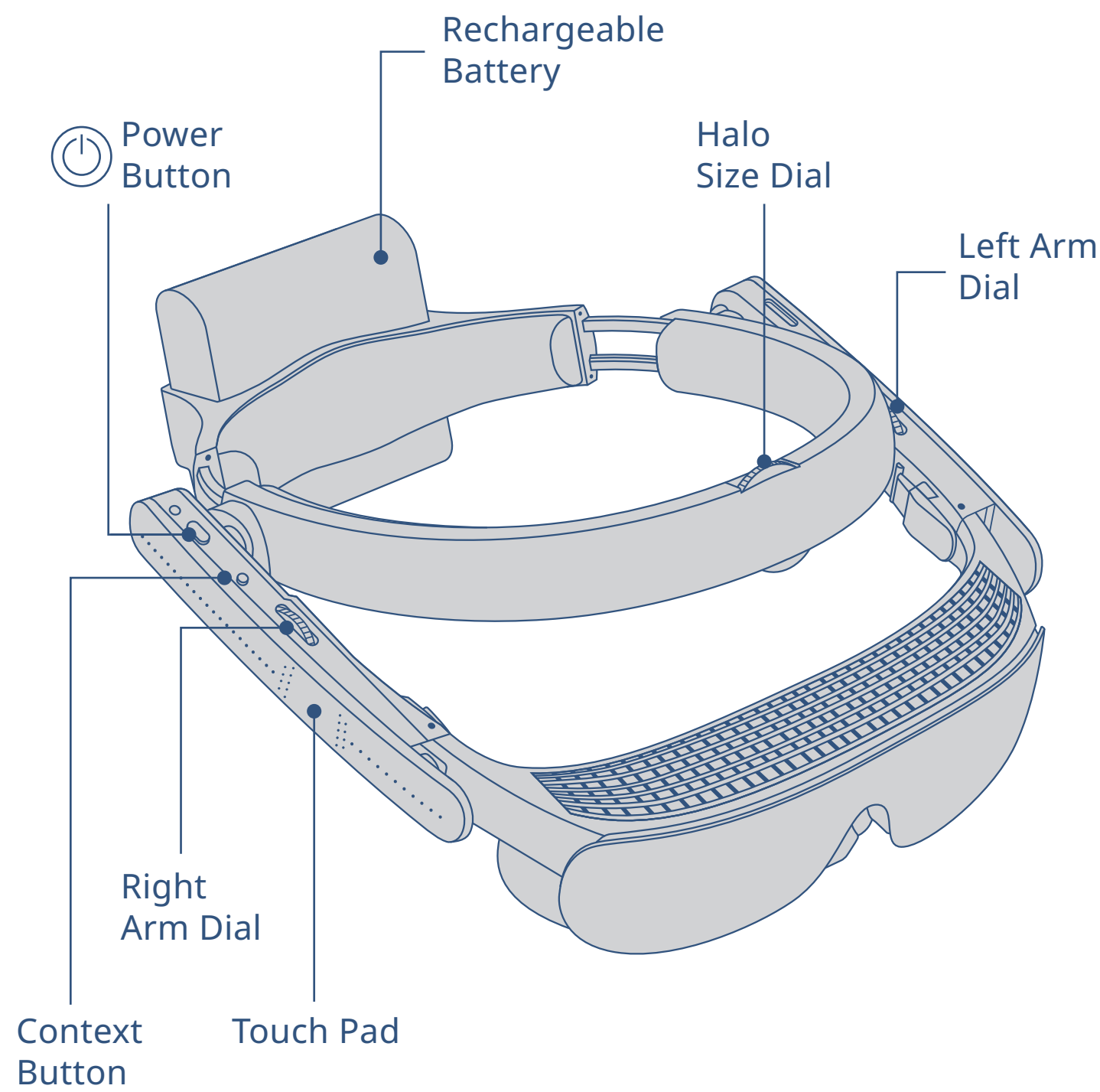
This guide and the videos that display on your eSight will guide you through setting up your eSight and learning the controls.

The complete process takes 30-45 minutes and requires access to a computer or mobile phone with an internet or Wi-Fi connection. While you can do a partial setup in less than 10 minutes, completing the full process is recommended.

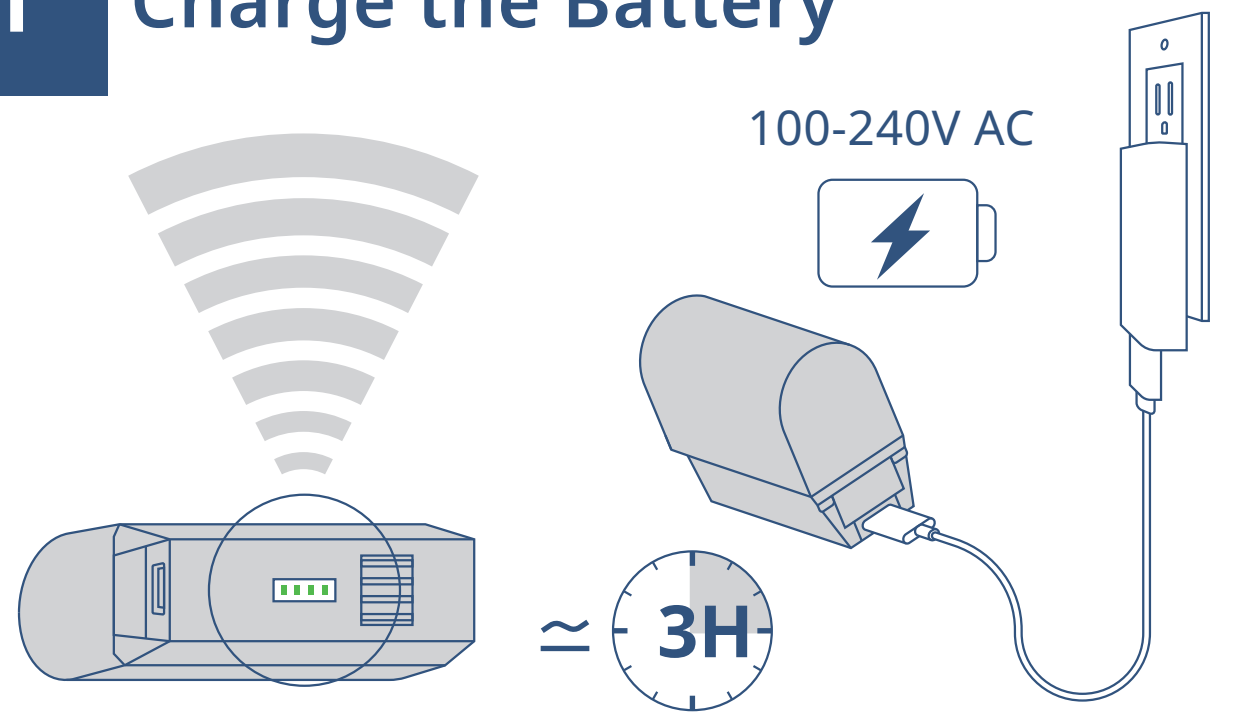
If you have a companion helping you set up eSight, they can view more detailed information about eSight at [www.eSightEyewear.com/support](http://www.eSightEyewear.com/support)

Let's begin!

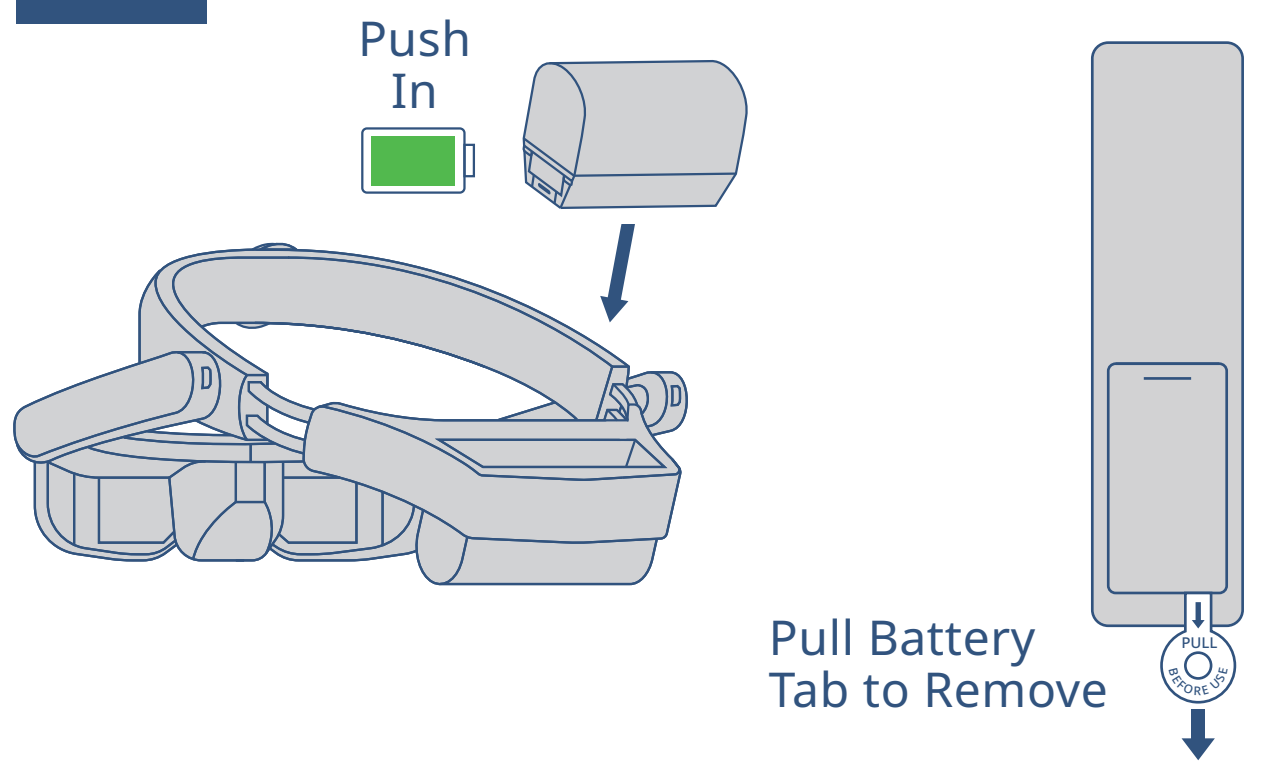
## **i** Key Features



## **1** Charge the Battery

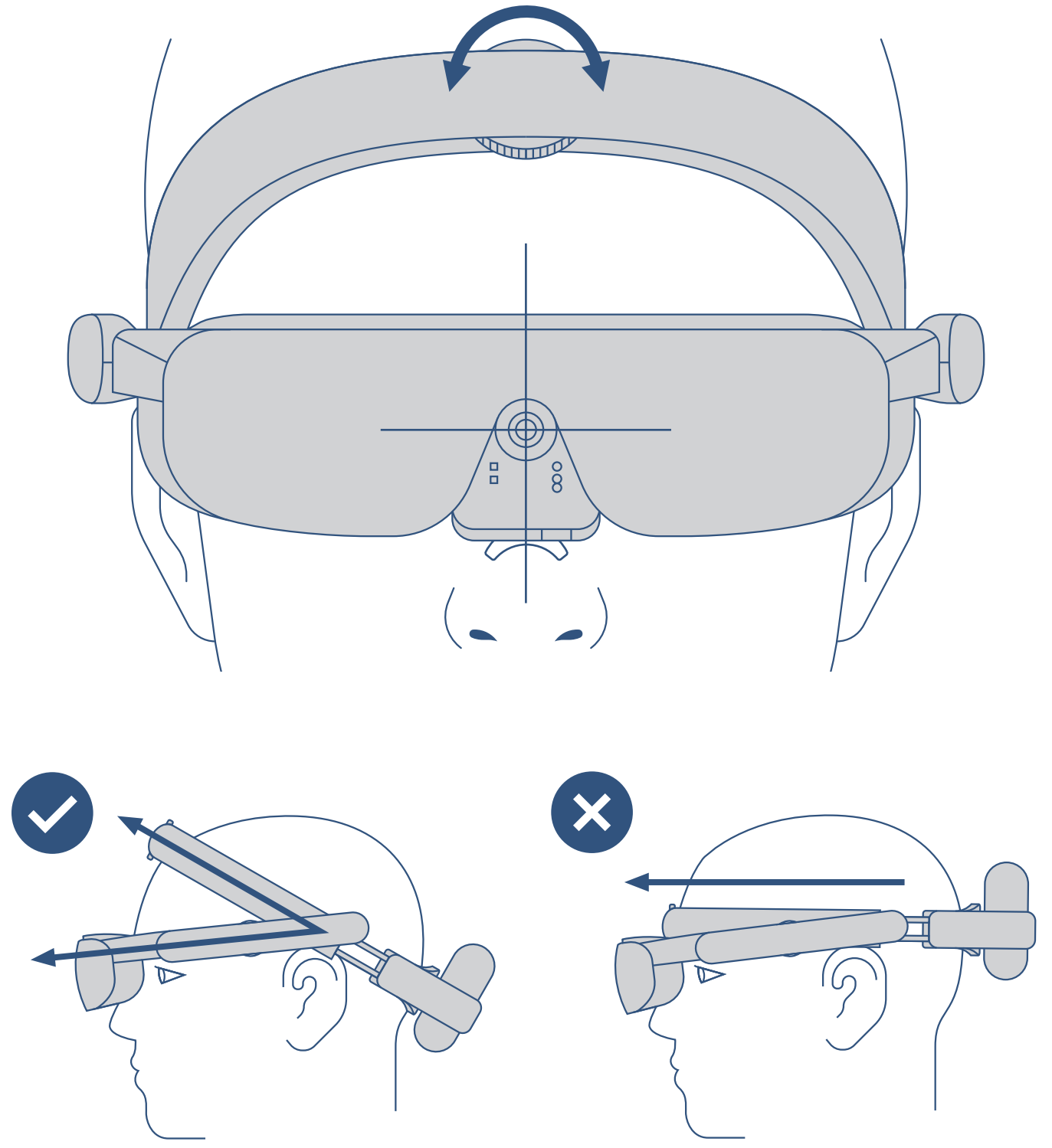


## **2** Insert Battery & Remove Tab



## **3** Secure & Center eSight

Secure eSight on your head and center eSight on your face.



## **4** Adjust the Height of the Arms

Lower the arms to adjust the height of the visor so your eyes are vertically centered in the screens.

